

## Landfill Hours:

### Monday - Friday

7:00 a.m. - 4:30 p.m.

### Saturday

8:00 a.m. - 2:00 p.m.

### Closed

New Year's Day, Thanksgiving  
and Christmas Day

## Landfill Fees:

### Tipping Fee

Minimum  
Disposal Fee  
up to 500 lbs. ... \$ 10.50/vehicle

Loads 500 lbs.  
and over ..... \$ 42.00/ton

Loads with 25%  
or more of  
concrete, rock,  
brick, or other  
aggregates .... \$ 84.00/ton

### Tires\*

Car ..... \$ 3.25/tire  
Truck ..... \$ 9.00/tire  
Equipment ..... \$ 31.25/tire  
Large Equip. .... \$ 36.25/tire  
Implement ..... \$ 87.75/tire  
\*Extra charge for mounted tires

### Limbs

Residential: Free  
Commercial: \$ 10.50 minimum  
prorated at \$ 21.00/ton

## Do's...

For everyone's safety please, follow all instructions:

- Stay on approved landfill roadways
- Watch out for heavy equipment and trucks
- Read and pay close attention to all posted signs
- Take all materials to the appropriate locations as directed by the scale-house attendant

## and Don'ts

Throw away the following types of waste:

- Hazardous Wastes
- Flammable Liquids or Solids
- Lithium-ion/ Rechargeable Batteries
- Propane Tanks
- Corrosive Wastes
- Toxic Wastes
- Reactive Wastes
- Explosives
- Any items containing Freon (Unless certified that Freon has been removed)

### **Household Hazardous Waste (HHW) needs to be brought to the Salina HHW Facility!**

Open Thursdays 7:30 a.m.-7:00 p.m.,  
the first Saturday of each month  
8:00 a.m.-12:00 p.m. and by  
appointment.

315 E. Elm Street, Salina  
(785) 826-6638

<http://www.salina-ks.gov/HHW>

City of



Salina

## Municipal Solid Waste Landfill

4292 S. Burma Road  
(785) 826-7395

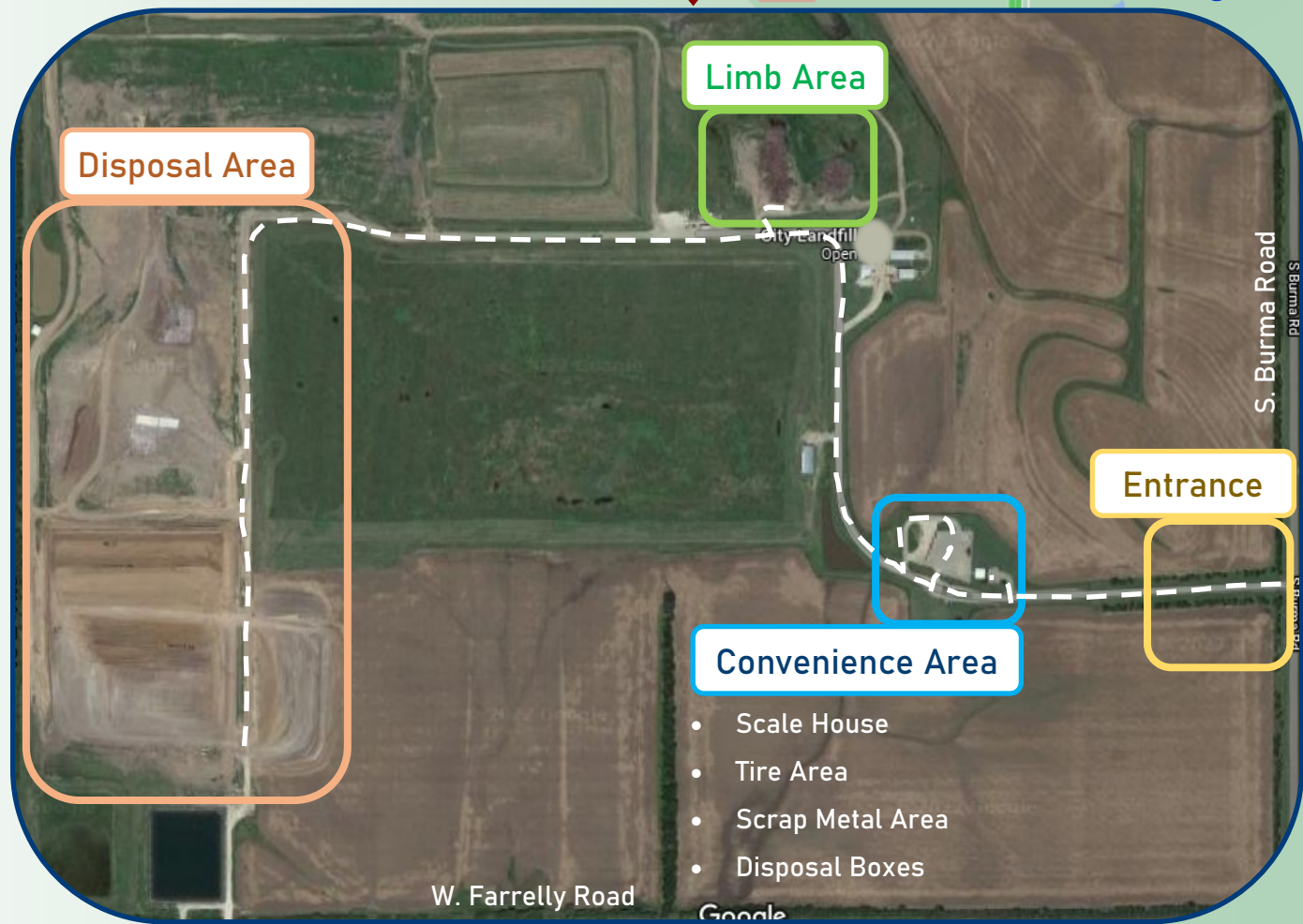
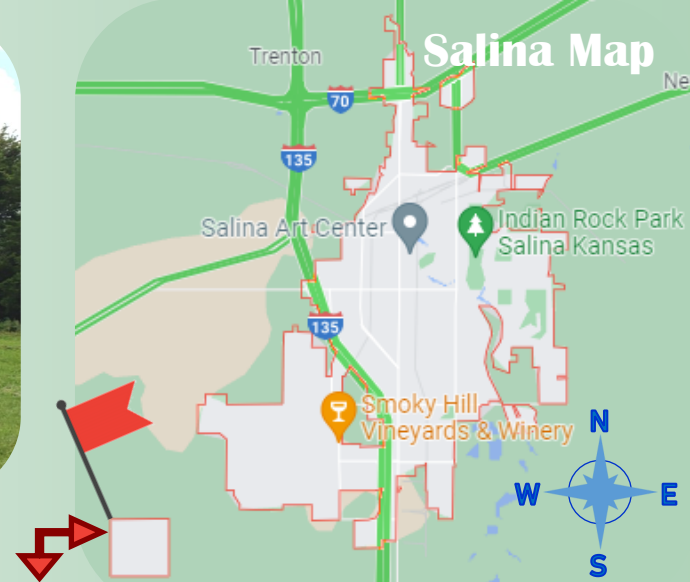
<http://www.salina-ks.gov/Landfill>



# SECURE YOUR LOAD FOR SAFER ROADS AND TO PREVENT LITTERING



**Salina Landfill Map**



- Scale House
- Tire Area
- Scrap Metal Area
- Disposal Boxes

\* Kansas Statute, 8-1906 Securing Loads on Vehicles  
 \* Uniform Public Offense Code, Sec. 6.8 Criminal Littering  
 \* Salina, KS Municipal Code of Ordinances, Sec. 34-51.- Standards for Transportation and Vehicles